



# SECURITY FIXINGS

## SECURITY FIXINGS

### FLOOR & WALL BRACKETS SECURITY STRAPS FOOT CLAMPS

**Keep your customers  
and machines safe  
from rocking, tilting  
and theft.**



Standard security foot



Standard wall clamp



Door strap preventing unauthorised access



### FOOT & WALL CLAMPS

Rocking and tilting of certain machines is a popular means of obtaining free product for certain vandals.

The problems this causes, however, is far greater than simply lost product; safety can be seriously compromised as the machine could fall or trap nearby individuals.

Safer Systems offers a simple, easy-to-install solution; foot clamps and wall brackets, which can be attached to a variety of vending machines.

The clamps and brackets are simple to fit using standard tools and take approximately 1 hour to install:

- Standard power drill
- 14mm SDS drill bit
- 13mm socket
- 4 x M8 rawl bolts
- 4 x self-tapping 20mm bolts

Foot clamps and wall brackets can be applied to a wide variety of machines, and are suitable for use on concrete sub-structures. (Note: brackets are not suitable for use on grass, tarmac or wood.)

### MACHINE STRAPS

Made from high grade steel, the machine strap fits neatly around the vending door and is secured using a quality padlock. And because the strap discreetly protects both the door from being prized open and the door lock face it does not inhibit sales.

Like the clamps, the bracket is quick and easy to install using standard tools, namely:

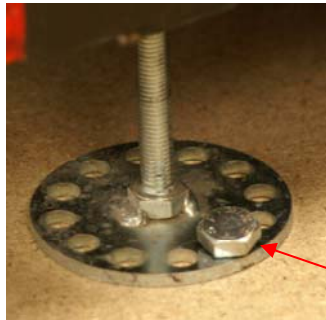
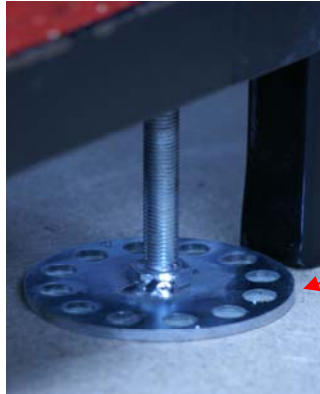
- 10mm spanner
- Standard power drill

The strap is easily adjustable to fit a wide range of vending machines, from glass fronted merchandisers to hot drinks machines and is available in a number of colours.



## SECURITY FIXINGS

### FOOT & WALL BRACKETS: INSTALLATION GUIDE:



- Lift machine to allow access to both front feet
- Remove existing machine feet
- Screw in new bolt down feet (as shown left)
- Ensure machine is level and in its correct location
- Mark the anchor bolt hole for the foot on the ground
- Remove machine and drill the hole in the required spot
- Reposition machine, lining up the foot with the hole beneath
- Insert anchor bolt

### MACHINE STRAPS: INSTALLATION GUIDE:



- Mark the position of the anchor brackets on both sides of the machine (preferably so that the strap covers the lock face).
- Drill positional holes on both sides of the machine.
- Insert 6mm coach bolts to secure anchor brackets.
- Place strap over anchor brackets.
- Secure with padlock.

SAFER SYSTEMS (UK) LIMITED

Units 7/8, Molyneux Business Park, Whitworth Road, Darley Dale, Matlock, Derbyshire DE4 3JH,  
United Kingdom

Tel: ++ (0) 1629 735577

Fax: ++ (0) 1629 735588

E-mail: [sales@safersystems.co.uk](mailto:sales@safersystems.co.uk)